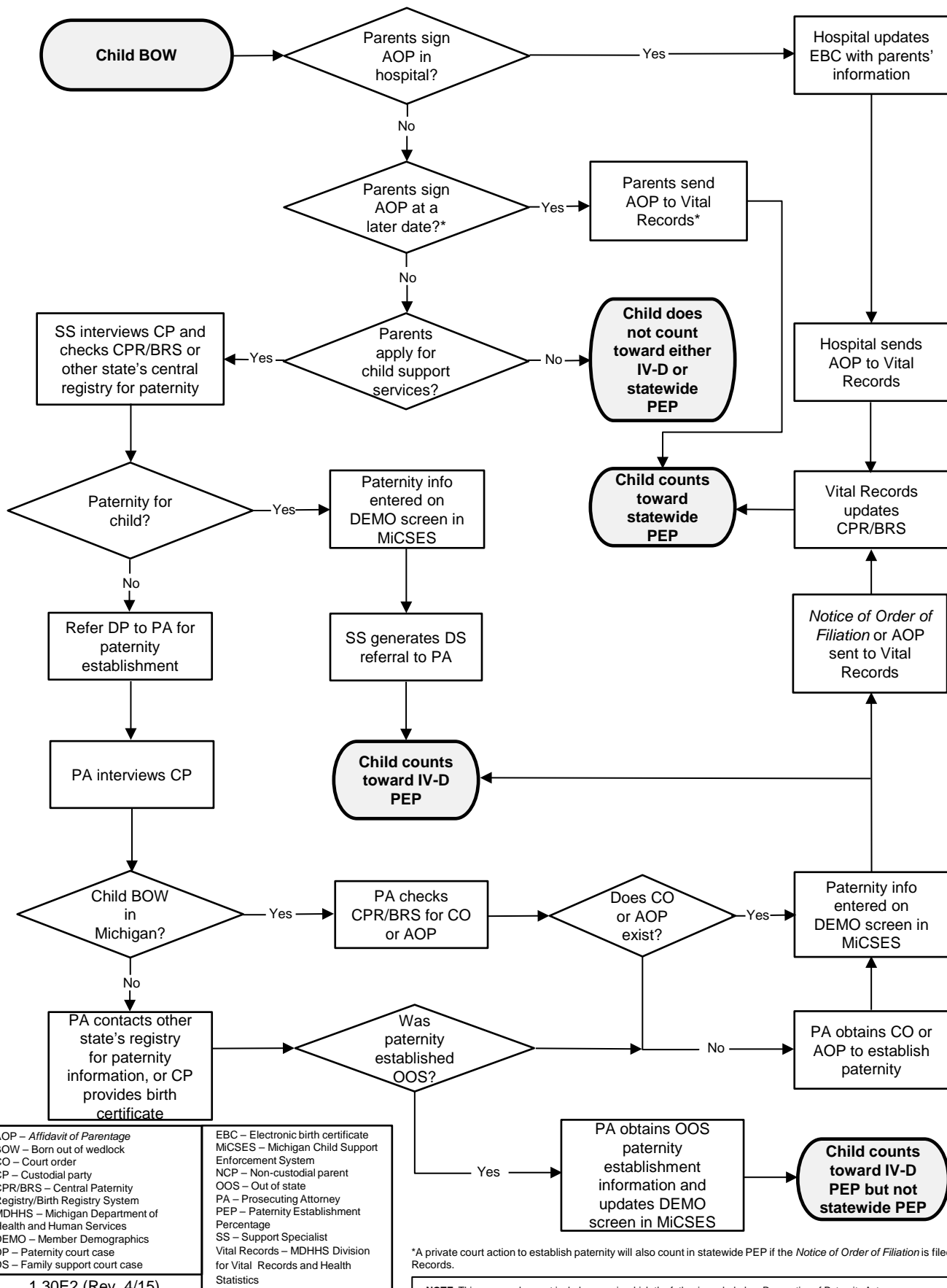


# Reporting Process for IV-D and Statewide PEP



AOP – Affidavit of Parentage  
 BOW – Born out of wedlock  
 CO – Court order  
 CP – Custodial party  
 CPR/BRS – Central Paternity Registry/Birth Registry System  
 MDHHS – Michigan Department of Health and Human Services  
 DEMO – Member Demographics  
 DP – Paternity court case  
 DS – Family support court case

EBC – Electronic birth certificate  
 MiCSES – Michigan Child Support Enforcement System  
 NCP – Non-custodial parent  
 OOS – Out of state  
 PA – Prosecuting Attorney  
 PEP – Paternity Establishment Percentage  
 SS – Support Specialist  
 Vital Records – MDHHS Division for Vital Records and Health Statistics

\*A private court action to establish paternity will also count in statewide PEP if the Notice of Order of Filiation is filed with Vital Records.

**NOTE:** This process does not include cases in which the father is excluded, or Revocation of Paternity Act cases.